

Sorting Game Instructions

Instructions:

1. Cut out the 30 material cards and the 4 can cards.
2. Place the stack of material cards facedown on the table and line up the 4 can cards.
3. Players will then sort the material cards into the can they think the material belongs.
4. After the cards are sorted players will reference the answer key and go through each material and state whether the material was placed in the correct can.
5. The player with the most materials sorted correctly wins. If both players sorted an equal number of materials correctly, the player that sorted the materials quickest wins.







PLASTIC BAG



MILK JUG



MAIL



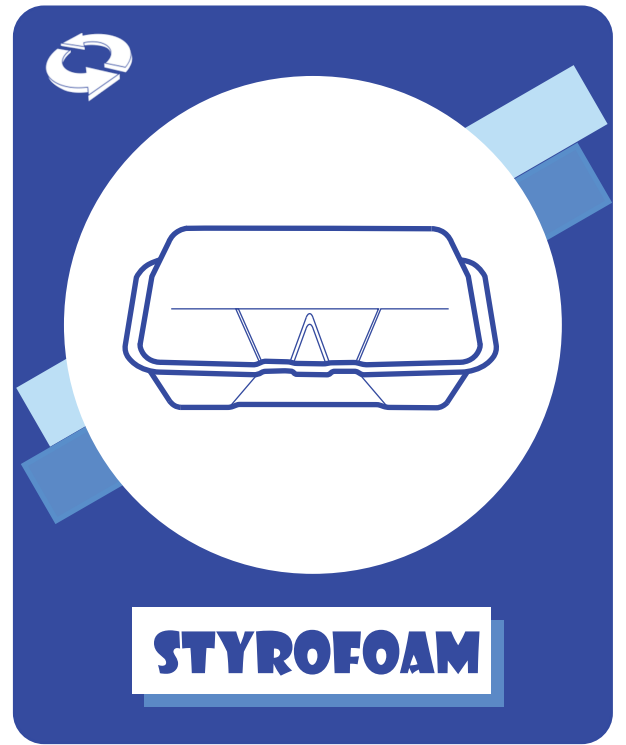
SOUP CAN



GREASY PIZZA BOX



LEAVES






PLASTIC BOTTLE



CEREAL BOX



OFFICE PAPER





PAPER BAG



SANDWICH BAG



LAUNDRY DETERGENT



APPLE CORE



BUTTER TUB



NEWSPAPER



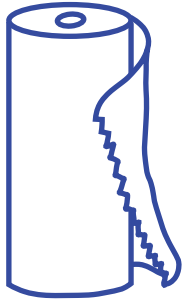
TEA BAGS



PLASTIC CUP



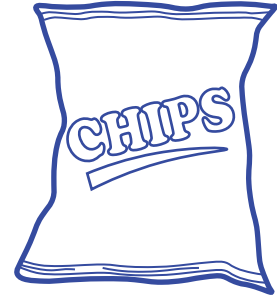
GLASS BOTTLE



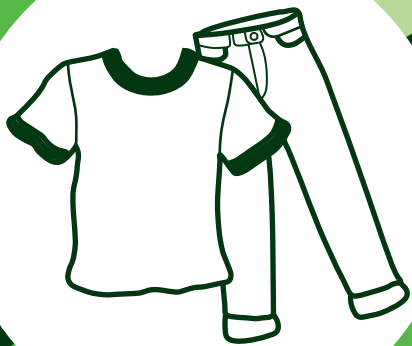
PAPER TOWELS



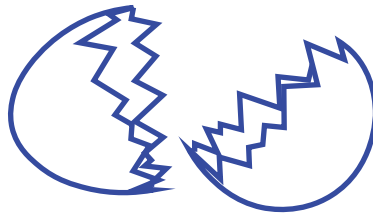
MASON JAR



CHIP BAG



CLOTHES



EGG SHELLS



EMPTY AEROSOL CAN

ANSWER KEY

GARBAGE

Juice Carton
Plastic Bag
Sandwich Bag
Greasy Pizza Box
Paper Towels
Clothes
Chip Bag
Styrofoam
Padded Envelope
Plastic Cup

RECYCLE

Milk Jug
Soup Can
Paper Bag
Cereal Box
Laundry Detergent
Plastic Bottle
Office Paper
Butter Tub
Newspaper
Empty Aerosol Can
Cardboard Box
Magazine
Mail
Soda Can

COMPOST

Egg Shells
Leaves
Apple Core
Tea Bag

GLASS

Mason Jar
Glass Bottle

*Before disposing
of these items,
try repurposing or
donating them!*

